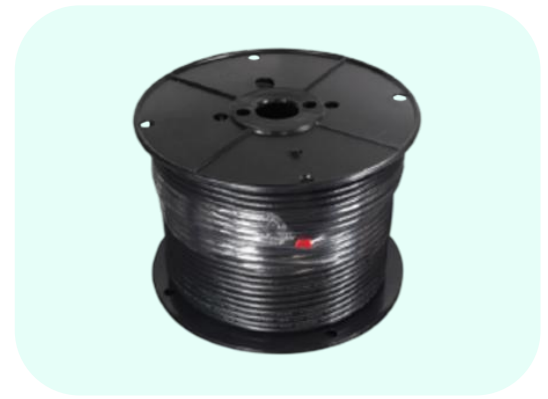


RG6 Series 6, Tri-Shield 77% Coaxial Cable,
Black, 500ft Countdown print
CX-CB-R6T-77B-500



Specification

General

| | |
|----------------|-------------------|
| Braid Coverage | 77 % |
| Cable Type | Series 6 |
| Packaging Type | MOGO® Refill Reel |

Construction Materials

| | |
|---------------------|---|
| Jacket Material | PVC |
| Jacket Color | Black |
| Shield Materials | Bonded inner foil + 77 % aluminum braid + bonded outer foil |
| Dielectric Material | Foam PE |
| Inner Conductor | Copper-clad steel wire |

Dimensions

| | | |
|--------------------------|-----------|----------|
| Cable Length | 500 ft | 152 m |
| Diameter Over Jacket | 0.275 in | 6.99 mm |
| Jacket Wall Thickness | 0.03 in | 0.76 mm |
| Diameter Over Tape | 0.186 in | 4.72 mm |
| Diameter Over Dielectric | 0.177 in | 4.49 mm |
| Diameter Inner Conductor | 0.0403 in | 1.024 mm |
| Reel Flange Diameter | 10 in | 260 mm |
| Hub Diameter | 3.4 in | 86 mm |
| Traverse Width | 7 in | 180 mm |
| Total Weight | 16 lbs | 7.3 kg |

Electrical Specifications

| | |
|---------------------------------|----------------------------------|
| Operating Frequency Band | 5 to 3000 MHz |
| Impedance | 75 Ohms |
| Velocity | 85% |
| DC Loop Resistance | 32.4 Ohms / kft 106 Ohms / km |
| Dielectric Strength | 1500 V |
| Jacket Spark Test Voltage (rms) | 2500 V |

Attenuation @ 68 °F (20 °C)

| Freq. (MHz) | db / 100 ft | db / 100 m | Freq. (MHz) | db / 100 ft | dB / 100 m |
|-------------|-------------|------------|-------------|-------------|------------|
| 5 | 0.58 | 1.90 | 870 | 6.11 | 20.04 |
| 55 | 1.60 | 5.25 | 1000 | 6.55 | 21.49 |
| 211 | 3.05 | 10.00 | 1218 | 7.21 | 23.62 |
| 250 | 3.30 | 10.82 | 1300 | 7.53 | 24.67 |
| 270 | 3.37 | 11.04 | 1400 | 7.84 | 25.68 |
| 300 | 3.55 | 11.64 | 1500 | 8.13 | 26.63 |
| 330 | 3.74 | 12.26 | 1600 | 8.42 | 27.58 |
| 350 | 3.85 | 12.63 | 1700 | 8.70 | 28.50 |
| 400 | 4.15 | 13.61 | 1800 | 8.97 | 29.38 |
| 450 | 4.40 | 14.43 | 2000 | 9.50 | 31.12 |
| 500 | 4.66 | 15.29 | 2200 | 10.01 | 32.79 |
| 550 | 4.90 | 16.08 | 2500 | 10.73 | 35.15 |
| 600 | 5.10 | 16.73 | 2800 | 11.42 | 37.41 |
| 750 | 5.65 | 18.54 | 3000 | 11.86 | 38.85 |