

**SPECIFICATION**

1 CUSTOMER  
2 PRODUCT HYPONIC DRIVE  
3 QTY 1 UNIT

4 SPEC.  
MODEL NO RNYMS02-1220-EP-5  
REDUCTION RATIO 5 : 1  
INPUT POWER 0.2 kW  
INPUT SPEED 1450 r/min  
OUTPUT SPEED 290 r/min  
OUTPUT TORQUE 5.61 Nm  
SERVICE FACTOR 2.00

MOTOR TEFC 3-PHASE INDUCTION MOTOR  
0.2 kW 4 P  
220V/380 V 50 Hz 1450 r/min  
HIGH EFFICIENCY IE3  
THERMAL CLASS F, RATING S1  
TERMINAL BOX CONDUIT TUBE THREAD TYPE 1-M16x1.5, 1-M25x1.5  
VARNISH TREATMENT FOR MOISTURE  
DEGRESS OF PROTECTION IP66

REDUCER HYPONIC DRIVE  
LUBRICATION METHOD GREASE  
AMBIENT TEMPERATURE -10°C ~ + 50°C

5 OUTLINE DIMENSIONS & MASS  
DIMENSIONS OUTLINE DWG NO. SMVNLGC260027  
KEY JIS B-1301-1996 PARALLEL KEY  
TOLERANCES JIS B-0401-1976

HISTORY 1)

31 Mar 2026

APPROVAL	PREPARE BY
	KHA

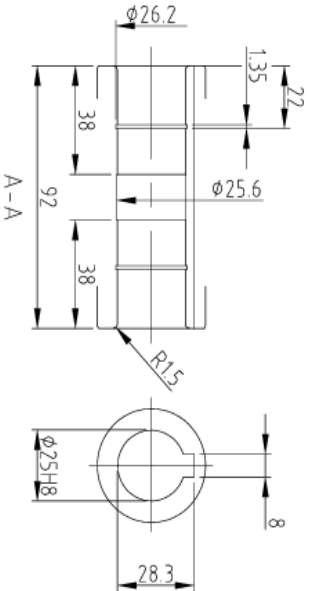
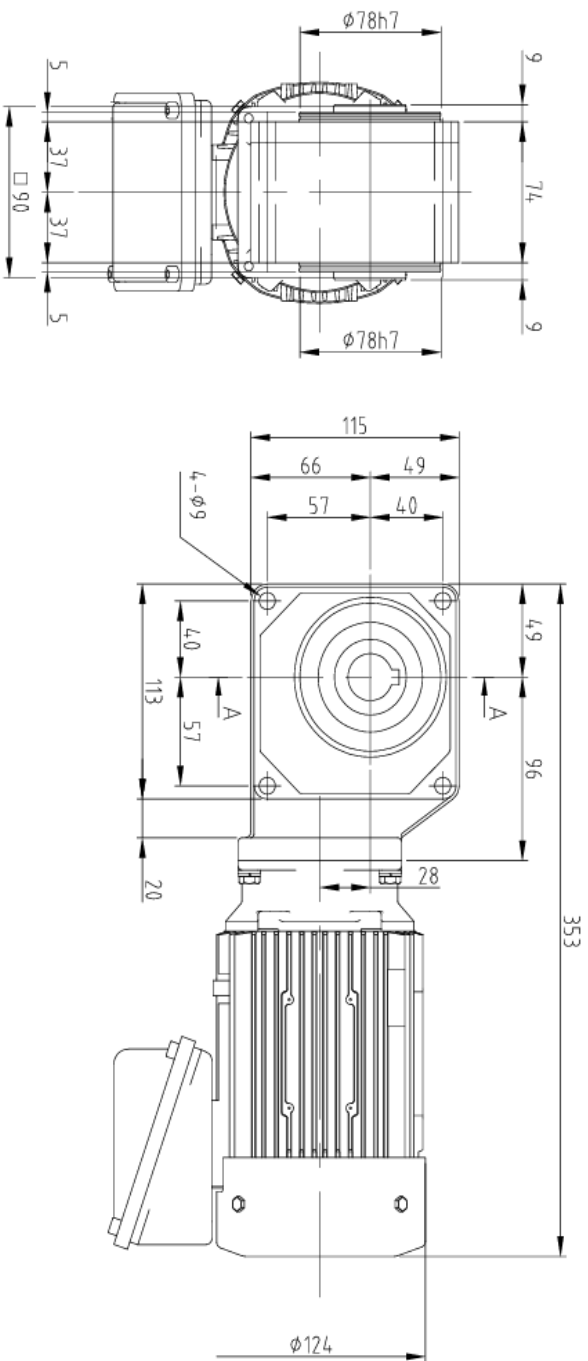
Warranty Period:  
The Warranty period for the Products shall be 18 months after the shipment of Products from the seller's works or 12 months from the Products coming into operation, whichever comes first.

Warranty Condition  
In case that any problems, troubles or damages on the Products arise due to the defects in the Products during the above "Warranty Period", although the products are appropriately and properly installed in, connected or combined to the equipment or machines, or maintained in accordance with the maintenance manual and are properly operated under the conditions as described in the catalogue or otherwise as agree upon in writing between Seller and Buyer or its customer, the Seller will provide, at its sole discretion, appropriate repair or replacement of the Products free of charge, unless the Exception for warranty is applied. However, in the event that the Products is installed, connected or combined to or integrated into the equipment or machines, the Seller shall not reimburse the costs for removal or re-installation of the Products or other incidental costs related thereto, any lost opportunity, loss of profit or any other incidental or consequential losses or damages incurred by the Buyer or its customers. The Exception for Warranty is stipulated in the warranty condition described in the catalogue of the products or the maintenance manual provided at the time of delivery of the Product.

Please return the Specifications to us by \_\_\_\_\_  
In case the Specifications are not returned to us by the date stated above, the product will be manufactured in accordance with the Specifications. If any, or correction of the Specifications are required, please note that we may propose to change the delivery date and/or price of Products.

Acknowledged and confirmed by the customer:  
Signature: \_\_\_\_\_  
Date: \_\_\_\_\_

FOR REFERENCE ONLY



NOTES:  
1. ALL MAJOR DIMENSIONS TO BE FINALIZED AT DETAIL DESIGN

**Sumitomo Drive Technologies**

◆ SH-CYD 0 INET MARI CO LTD.  
Phong Bui Kich-Son Street No. 23/3A  
Le Minh Xuan Industrial Park, Binh Chanh District, HOC  
http://www.sumitomedrive.com

SCALE: 1:1  
APPROVED BY: \_\_\_\_\_  
CHECKED BY: \_\_\_\_\_  
DATE: 31-03-2026  
DRAWN BY: KHIA VO

**HYPONIC DRIVE OUTLINE DRAWING**



DWG. NO. **SMVNLGN260027**

RNYMS02-1220-EP-Ratio