


## DCRS-9816 Core-layer Chassis Switch

### Product Overview







DCN DCRS-9816 is high performance wire speed chassis switch. DCRS-9816 has 18 slots, including 2 management slots and 16 business slots. With redundant power supply, fans and management modules, the DCRS-9816 ensures continuous operation and fully redundant system.

The DCRS-9800 series serves campus and data center networking requirements in enterprise, commercial, and service provider environments.

### Model and Appearance of DCRS-9816

Appearance	Description
 <p>DCRS-9816</p>	<ul style="list-style-type: none"><li>● Number of Management Engine slots: 2</li><li>● Number of Business slots: 16</li><li>● Port density per chassis: 384 x GE, 320 x 10GE, 32 x 40GE</li><li>● Dimensions (W x D x H): 440mm × 450mm × 842mm(19U)</li><li>● Switching Capacity: 1536Gbps</li><li>● Forwarding performance: 1143Mpps</li></ul>

## Blades

Appearance	Description
 <p>MRS-9800-SUP</p>	Super management blade, 1+1 redundancy
 <p>MRS-9800-FAB</p>	Fabric blade, 1+1 redundancy
 <p>MRS-9800-20XS2Q</p>	20* 10GbE (SFP+) + 2*40GbE (QSFP) ports Wire-Speed, IPv6, MPLS, VPLS supported
 <p>MRS-9800-24GT-V</p>	24* 10/100/1000Base-T ports Wire-Speed, IPv6, MPLS, VPLS supported
 <p>MRS-9800-24GB-V</p>	24 * 100/1000Base-X(SFP) ports Wire-Speed, IPv6, MPLS, VPLS supported
 <p>MRS-9800-AC</p>	Power supply module Rated input voltage range: 100~240V AC 50/60Hz; Maximum input voltage range: 90~264V AC 47/63Hz; Maximum input current: 10 A (input voltage: 90V AC) Maximum output current: 0.5A (output voltage: 10V DC)/12.6A (output voltage: 46.8V DC) Rated output voltage:12V/48V DC Rated output power: 600W N+M redundancy

## Highlights

### Performance and Scalability

DCRS-9816 supports up to max 320\*10G ports or 384 Gigabit ports, providing flexibility and high port density. 10G blades support max 20 ports for downlink to distribution layer switches or access switches directly, aggregating them to the core layer, and preventing port bottlenecks in Gigabit switches. Furthermore, the optional 10Gigabit Ethernet SFP+ transceivers can be chosen for different distance fiber uplinks. Backup Master ensures the availability of a master controller for network control at any time. Firmware & configuration are automatically upgraded from master to slave units for management simplicity. Intensive protocol support is included for MPLS, L2/L3 MPLS-VPN supported by a software upgrade to ensuring future investment protection.

### OpenFlow

Supports OpenFlow1.2 standard protocol. OpenFlow network is increasingly becoming a trend as the core protocol of the SDN network. It makes the network easier programming OpenFlow brings high performance to datacenter users via a self-defined network. With OpenFlow, this product is ideal to build SDN test-bed for research institutes and SDN Experimental Bureau for large ISP and operator. Support open controller OpenDaylight, Floodlight, Ryu, Pox, etc.

### Continuous Availability

IEEE 802.1w Rapid Spanning Tree Protocol provides a loop-free network and redundant links to the core network with rapid convergence. IEEE 802.1s Multiple Spanning Tree Protocol runs STP per VLAN base, providing Layer 2 load sharing on redundant links. IEEE 802.3ad Link Aggregation Control Protocol (LACP) increases bandwidth by automatically aggregating several physical links together as a logical trunk and providing load balance and fault tolerance for uplink connections. IGMP snooping prevents flooding of IP multicast traffic and limits bandwidth-intensive video traffic only to the subscribers.

### L3 Features

The DCRS-9800 series delivers high-performance hardware-based IP routing. RIP, OSPF, and BGP provide dynamic routing by exchanging routing information with other Layer 3 switches or routers within the same domain and different domains. DVMRP, PIM-SM/DM Multicast Routing Protocols send IP multicast traffic from one subnet to another. VRRP prevents your system from failing by dynamically backing up multiple L3 switches for routing. Support OSPF and BGP graceful restart to protect network stability.

### Strong Multicast

The DCRS-9800 supports abundant multicast features. The product support rich L2 multicast features such as IGMPv1/v2/v3 and snooping and L3 multicast protocols such as DVMRP, PIM-DM, PIM-SM, and PIM-SSM. As a rich application experience, the product support Multicast VLAN Register and Multicast Receive Control and Illegal Multicast Source Detection function.

### Easy High-Reliability Network

MRPP (Multi-layer Ring Protection Protocol), is a link-layer protocol applied on Ethernet loop protection which reduces network convergence time to 50ms.

## Specifications

Items	DCRS-9816
Slot	2 management slots 16 business slots

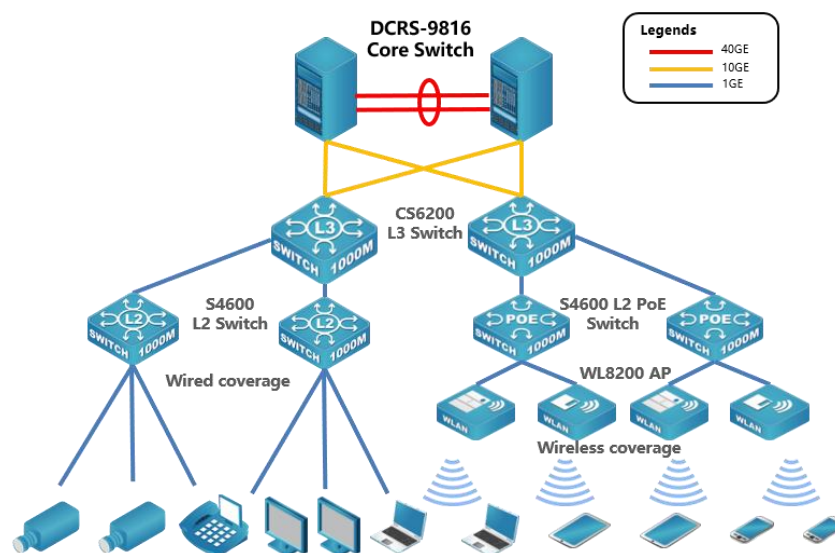
<b>Business Ports</b>	10/100/1000BASE-T: MAX 384 1000Base-SX: MAX 384 1000Base-LX: MAX 384 10G: MAX 320	
<b>Performance</b>		
<b>Switching Capacity</b>	1536Gbps	
<b>Forwarding Rate</b>	1143Mpps	
<b>Routing Table</b>	MAX 16K	
<b>VLAN Table</b>	4K	
<b>Features</b>		
<b>Forwarding</b>	Storage and Forwarding	
<b>L2 Features</b>	IEEE802.3(10Base-T) IEEE802.3u(100Base-TX) IEEE802.3z(1000BASE-X) IEEE802.3ab(1000Base-T) IEEE802.3ae(10GBase) Loopback Interface 9k Jumbo Frame Port Loopback Detection LLDP and LLDP-MED UDLD	
	LACP 802.3ad, max 128 group trunk with max 8 ports for each trunk Link Aggregation by manual	
	IEEE802.1d(STP) IEEE802.1w(RSTP) IEEE802.1s(MSTP) Max 48 instance Root Guard BPDU Guard BPDU Forwarding	
	One to one or any to one mirror Mirror cross-business cards RSPAN	
	IGMP v1/v2/v3, IGMP v1/v2/v3 Snooping, IGMP Proxy ICMPv6, ND, ND Snooping, MLDv1/v2, MLDv1/v2 Snooping	
	GVRP Port/ MAC/ IP Segment/ Portocol/ Voice/ Private/ VLAN support Multicast VLAN Register/MVR for IPv4 and IPv6	
	Port-based 802.1Q, 4K VLAN QinQ and Selective QinQ	
	DFI/Broadcast/Multicast Storm control	
	Binding (IPv4/IPv6), IP Source Guard MAC Filter, MAC Limit	
	IP Source Guard	
	Port Binding (IPv4 /IPv6)	
	Support Smart Link (or named Flexible Link)	
	<b>L3 Features</b>	IP Protocol (IP support both IPv4 and IPv6)
		Default Routing, Static Routing, Blackhole Route, VLSM and CIDR, RIPv1/V2, OSPFv2, BGP4, support MD5 Authentication LPM Routing
		OSPFv3, BGP4+ support
		Policy-based routing (PBR) for IPv4 and IPv6
Support 4-byte BGP AS number Support GR for OSPF and BGP		

	VRRP, VRRP v3
	DVMRP, PIM-DM, PIM-SM, PIM-SSM MSDP (Multicast Source Discovery Protocol) Static Multicast Route Multicast Edge Configure Anycast RP for IPv4 and IPv6 PIM-SM/DM/SSM for IPv6, 6 to 4 Tunnels, configured Tunnels, ISATAP Multicast Receive Control Illegal Multicast Source Detection
	URPF for IPv4 and IPv6
	BFD
	ECMP (Equal Cost Multi-Path) with maxim 8 groups
	ARP Guard, Local ARP Proxy, Proxy ARP, ARP Binding, Gratuitous ARP, ARP Limit
<b>Tunnel Technical</b>	Manual Configure IPv4/IPv6 tunnel 6to4 Tunnel ISATAP Tunnel GRE Tunnel
<b>MPLS</b>	255 VRF/VFI LDP L3 MPLS VPN VPLS MPLS QoS
<b>QoS</b>	8 Hardware Queues per port Traffic Classification based on IEEE 802.1p, ToS, port, and DiffServ SP, WRR, SWRR Traffic Shaping Rate Limit for Import and Export PRI Mark/Remark WRED 2 buckets with dual-rate and triply color mark
<b>ACL</b>	Standard and Expanded ACL IP ACL and MAC ACL, ACL based on source/definition IP, MAC, L3 protocol, TCP/UDP port number, IP PRI (DSCP, ToS, Precedence), Time Ingress and Egress ACL
<b>ACL-X</b>	Time-Based Security Auto-negotiation ACL rules can be configured to port, VLAN Can be used for QoS Classification
<b>Anti-attack and Security</b>	S-ARP: ARP Inspection, defense ARP-DOS Attack, and Address Clone Anti-Sweep: prevent Ping Sweep S-ICMP: resist PING-DOS attack, ICMP unreachable attack S-Buffer: prevent DDOS attack Switch engine CPU protection Key message priority: secure processing of key legal messages Port Credit: inspect illegal DHCP Server, Radius Server. Connection via credit port only Support URPF, avoid IP address clone

	All the above technologies efficiently prevent various DOS attack (e.g. ARP, Synflood, Smurf, ICMP attack), support ARP monitoring, defense Worm, Bluster, check sweep and raise an alarm
<b>DHCP</b>	Support DHCP Client, Relay, Snooping, Option 82
	DHCP Server for IPv4 and IPv6
	DHCP v6 and DHCP Snooping v6
<b>DNS</b>	DNS Client DNS Proxy
<b>Ring Protocol</b>	MRPP (Multi-Ring Protect Protocol)
<b>Access security</b>	802.1X <ul style="list-style-type: none"> <li>✓ Port, MAC, username based</li> <li>✓ Account-based on time length and traffic</li> <li>✓ Guest VLAN and Auto VLAN</li> <li>✓ Work with a private client can manage P2P traffic</li> </ul> MAC Based AAA (Client free access) PPPOE/PPPOE+ forwarding
<b>AAA</b>	RADIUS AAA for IPV4 and IPv6 TACACS+ AAA
<b>Configuration and Management</b>	CLI, Telnet, WEB, SSH and SSL
	SNMPv1/v2c/v3
	MIB
	RMON 1, 2, 3, 9
<b>Power Saving Technology</b>	Reduce power consumption, improve cooling and reliability Flexible fan and port management to save power consumption
<b>Syslog</b>	Save Syslog and Trap to local device or server Max. 8 servers for Syslog or Trap receive
<b>NMS</b>	Strict Access Control by ACL and QoS
	Access the switch through AAA or Local Authentication
	SNTP and NTP
	Setup Time Zone and Summer Time
<b>Supervision and Trouble Shooting</b>	Supervise abnormality of task, memory, CPU, stack, switch chip, temperature and raise an alarm Sflow Ping and Traceroute command
<b>Configuration Management</b>	Configuration file storage Command operation log Dual Images and files startup FTP/TFTP server or client upgrade X-modem protocol transfer the file
<b>OAM</b>	802.3ah 802.1ag
<b>Physical</b>	
<b>Dimension(W x D x H)</b>	440mm×450mm ×842mm (19U)
<b>Relative Humidity</b>	10%~90%, non-condensing
<b>Storage Temperature</b>	-40°C~70°C
<b>Operating Temperature</b>	0°C~40°C
<b>Power</b>	AC: Input 90~260V, 50~60 Hz:
<b>Power Consumption</b>	≤1600W
<b>MTBF</b>	>250,000 hours

## Typical Application

DCRS-9816 switch could be deployed on the core layer of campus network, education network, and enterprise data center network. The typical application scenario is shown below



## Order Information

Product	Description
<b>DCRS-9816</b>	DCRS-9816 routing switch chassis (2 slots for management cards and 16 slots for business blades. AC power supply 3+1 redundancy), standard with 1 MRS-9800-AC power supply, no management cards.
<b>MRS-9800-AC</b>	220V AC Power Supply (600W) for DCRS-9800
<b>MRS-9800-SUP</b>	DCRS-9800 Series super management blade
<b>MRS-9800-FAB</b>	DCRS-9800 Series fabric blade
<b>MRS-9800-20XS2Q</b>	DCRS-9800 Series Interface Module (20* 10GbE (SFP+) + 2*40GbE (QSFP) ports), Wire-Speed, IPv6, MPLS, VPLS supported
<b>MRS-9800-24GB-V</b>	DCRS-9800 Series Interface Module (24 * 100/1000Base-X(SFP) ports), Wire-Speed, IPv6, MPLS, VPLS supported
<b>MRS-9800-24GT-V</b>	DCRS-9800 Series Interface Module (24* 10/100/1000Base-T ports), Wire-Speed, IPv6, MPLS, VPLS supported