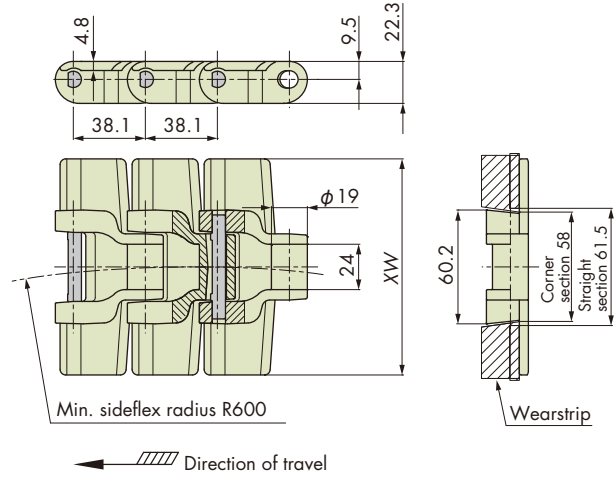
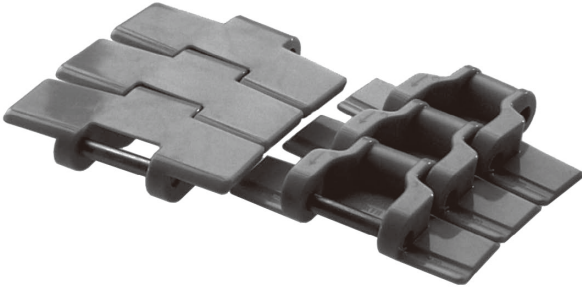


Features

1. Suitable for higher applied load conditions due to an approx. 1.8 times higher allowable load than TTUP.
2. Suitable for conveying large products due to its wide top plates.



Chain pitch mm	Backflex radius mm	Number of links per unit
38.1	40	80

Chain Material Table

Material	Standard Chain							High-Function Chain						
	Standard			Low friction/Wear resistant			Advanced low friction/Wear resistant	Low friction		Low friction/Wear resistant	Electrostatic preventive	Middle friction	Ultraviolet resistant	Food conveying
Material mark	—	B	BL	LFW	LFG	LFB	ALF	NLF	WR	HG	SE	MF	UVR	PFS
Link color	Gray	Blue	Sky blue	White	Green	Brown	Light blue	Dark gray	Dark green	Navy blue	Gray	Yellow	Light gray	Nile blue
Max. allowable load kN {kgf}	1.96{200}											1.45 {148}	1.96{200}	
Max. allowable speed m/min	90											—	90	
	40													
Operating temperature range °C	-20 to 80			-20 to (65)80			-20 to 80	-20 to (65)80	-20 to 80	-20 to (65)80	-20 to 80			
Pin material	SUS304													
Pin type	D-pin ^{Note: 3}													
TTUPS1143	△	△	△	△	○	△	△	△	△	△	△	△	△	△
TTUPS1270	△	△	△	△	△	△	△	△	△	△	△	△	△	△
TTUPS1524	△	△	△	△	△	△	△	△	△	△	△	△	△	△
TTUPS1905	△	△	△	△	○	△	△	△	△	△	△	△	△	△

- Note: 1. "○": Made-to-order products, "△": Made-to-order products (RFQ).
 Not available for other chain materials that are not listed in the chain material table above.
 2. Operating temperature of (the value in parentheses) is for wet conditions.
 3. TTUPS chains cannot connect with UTD-S knurled-pin type chains, which were sold until June 2005.
 4. Plastic pin type is not available.
 5. The chain widths of 127.0 mm and 152.4 mm are cut by machining.
 6. The chain mark on the bottom of the plate of which the width was cut by machining indicates information not for the chain of modified width but for the original chains.

Tsubaki Model Table

Material	Low friction/Wear resistant	Top plate width XW	Chain mass kg/m
Material mark	LFG		
Chain type	TTUPS1143-LFG	114.3	1.90
	TTUPS1270-LFG	127.0	2.00
	TTUPS1524-LFG	152.4	2.10
	TTUPS1905-LFG	190.5	2.30

- Note: 1. Chain type in normal face are made-to-order products. Refer to the chain material table in the above for availability.
 2. The chain mass of the chain materials available whose information are not described in on the left are the same with that in the Tsubaki model table on the left.

Model Numbering

Chain type	Top plate width	Material mark	Number of links
TTUPS	1143 ^{Note: 2}	- LFG ^{Note: 3}	+ 80 ^{Note: 4}

Unit

L

L: Link

- Note: 1. Do not leave space between letters and symbols.
 2. Please check the width of the top plate in the Tsubaki model table above.
 3. Please check the chain material and material marks in the chain material table above.
 4. Minimum quantity: 2, maximum quantity: 99999.