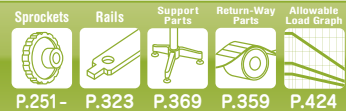


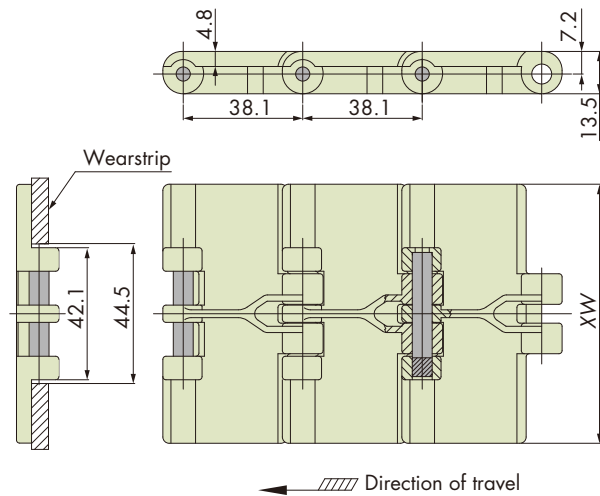
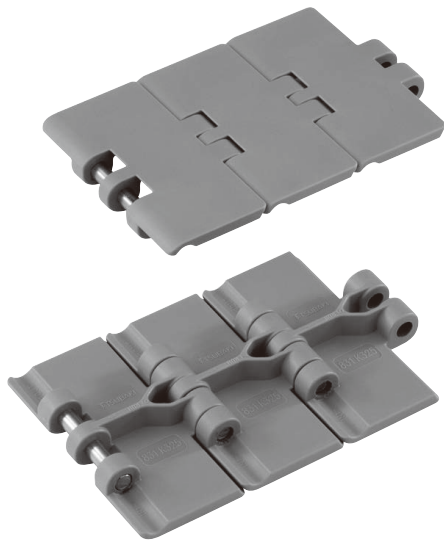
Plastic Top Chain TTPT

Straight Running



Features

Suitable for applications where top plates are susceptible to wear due to its thicker plate compared to TTP.
(Plate width: TTPT=4.8 mm, TTP=4.0 mm)



Chain pitch mm	Backflex radius mm	Number of links per unit
38.1	50	80

Chain Material Table

Standard Chain		
Material	Low friction/Wear resistant	
Material mark	LFB	
Link color	Brown	
Max. allowable load kN {kgf}	0.83{85}	
Max. allowable speed m/min	With lube	100
	No lube	50
Operating temperature range °C	-20 to (65)80	
Pin material	Equivalent to SUS304	
Pin type	Knurled pin	

- Note: 1. Not available for other chain materials that are not listed in the chain material table above.
2. Operating temperature of (the value in parentheses) is for wet conditions.
3. Plastic pin type is not available.
4. Connecting pins are not for sale separately.

Tsubaki Model Table

Material	Low friction/Wear resistant	Top plate width	Chain mass
Material mark	LFB	XW	kg/m
Chain type	TTPT826-LFB	82.6	1.04
	TTPT1143-LFB	114.3	1.29
	TTPT1905-LFB	190.5	1.82

Note: Chain type in boldface is a standard product. Chain type in normal face are made-to-order products.

Model Numbering

Chain type	Top plate width	Material mark	Number of links	Unit
TTPT	826 <small>Note: 2</small>	LFB	80 <small>Note: 3</small>	L

L: Link

- Note: 1. Do not leave space between letters and symbols.
2. Please check the width of the top plate in the Tsubaki model table above.
3. Minimum quantity: 2, maximum quantity: 99999.