

TS/TSA

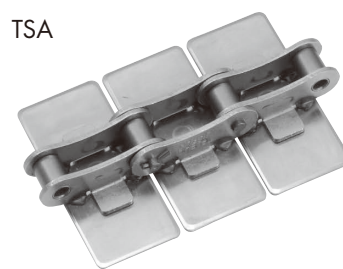
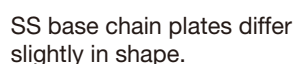
Features

1. The conveyor chain with plate attached to ANSI double pitch chain. Sprockets for double pitch chains should be used.
2. Base chains made of NP (nickel-plated), LMCNP (Lambda) or SS (stainless steel) are available.
3. Available in a wide variety of special finishes to suit various applications and work environments, including hard chromium plated, buffed top plates, and heat-treated top plates for improved wear resistant.

Chain Material

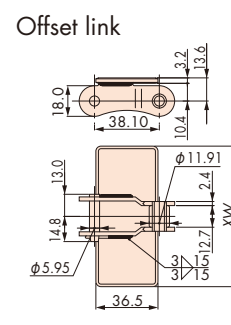
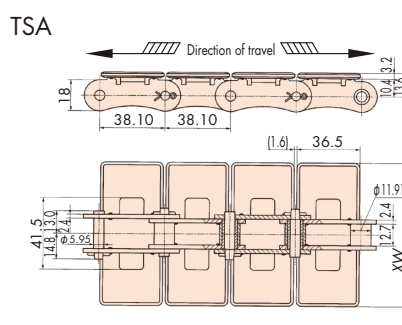
◆Standard series: Base chain is steel-made, SUS430 is used in top plates.

- ◆Standard series: Base chain is steel made, 304/316 is used in top plates.
- ◆NP series (nickel-plated): Base chains are a standard type processed with nickel-plating, providing corrosion resistance and better appearance.
- ◆LMCNP series (Lambda type): Lube-free chain in combination with NP type base chain and oil impregnated sintered bushes.
- ◆SS series: Made of type 304 stainless steel and is suitable for an environment where corrosion resistance is to be prioritized.

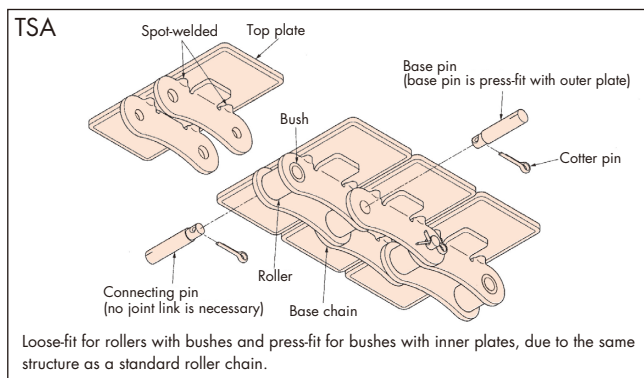
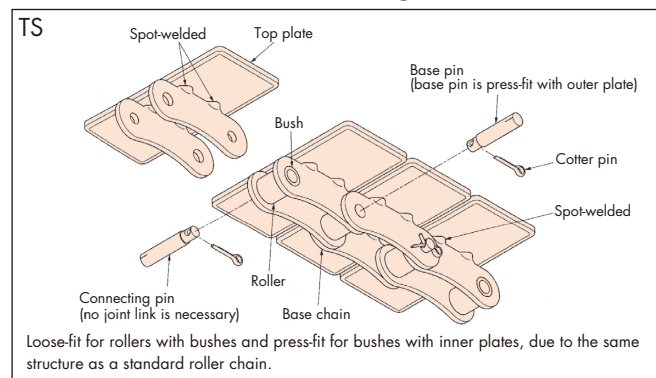


Chain pitch mm	Backflex radius mm	Number of links per unit
38.10	330	80

Drawing



Three-dimensional drawing



Sprockets

RF2060S sprocket (with 19 or more actual teeth) can be used.