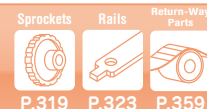


# Stainless Steel Top Chain

## TS-CTP, TSA-HTP

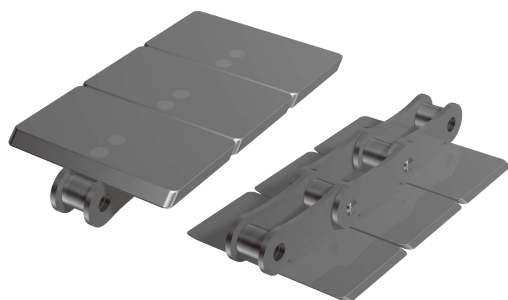
Design Stock

Straight Running

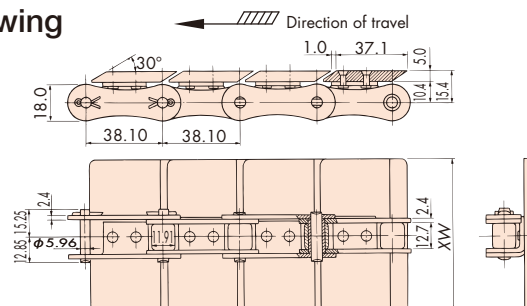


### TS-CTP Features/Chain Material

The narrow gap between plates prevent catching of conveyed product.



#### Drawing



Chain pitch mm	Backflex radius mm	Number of links per unit
38.10	1300	80

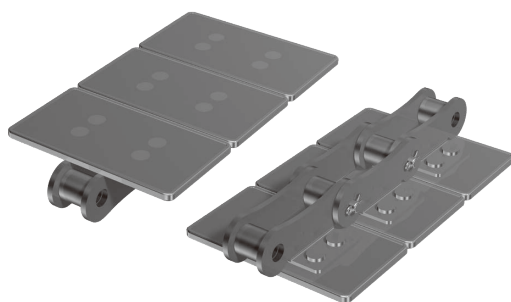
### Tsubaki Model Table

Chain type	Top plate width XW
TS635-CTP	63.5
TS762-CTP	76.2

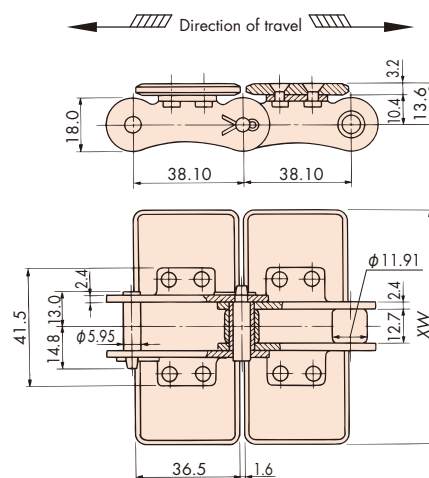
Note: 1. Made-to-order products.  
2. Sprockets for double pitch chains can be used.

### TSA-HTP Features/Chain Material

Hard to be scratched by quench hardening of the top plate (carbon steel).



#### Drawing



Chain pitch mm	Backflex radius mm	Number of links per unit
38.10	330	80

### Tsubaki Model Table

Chain type	Top plate width XW	Chain type	Top plate width XW
TSA550-HTP	55.0	TSA826-HTP	82.6
TSA635-HTP	63.5	TSA950-HTP	95.0
TSA762-HTP	76.2	TSA1016-HTP	101.6

Note: 1. Made-to-order products.  
2. Top plate hardened to HRC40 (base chain standard carbon steel).  
3. Top plate is riveted to the base chain.  
4. Sprockets for double pitch chains can be used.

### Model Numbering

#### ◆ Chain

Chain type	Top plate width	Top plate material mark	Number of links	End link	Options
<b>TSA</b>	<b>762</b> <small>Note: 2</small>	<b>- HTP</b> <small>Note: 3</small>	<b>+ 20L</b> <small>Note: 4</small>	<b>- PKR</b> <small>Note: 5</small>	<b>- P</b> <small>Note: 5</small>

Note: 1. Do not leave space between letters and symbols.  
2. Please check the widths of top plates in the above Tsubaki model table.  
3. Please check the materials of base chains in the above Tsubaki model table.  
4. Minimum quantity: 3, maximum quantity: 99999.  
5. Please refer on page 6.