

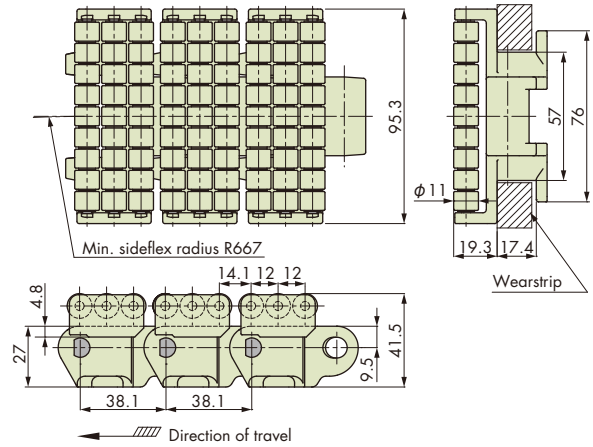
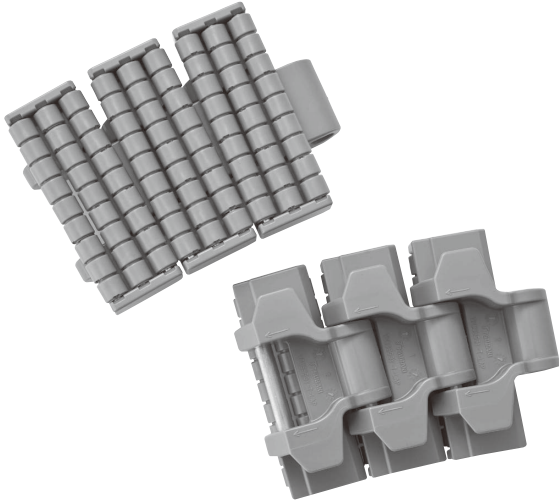
Plastic Top/Curved Accumulation Chain TPUS-Y-LAP

Sideflexing Running

Sprockets P.262, 263	Rails P.323	Return-Way Parts P.359	Allowable Load Graph P.429
-------------------------	----------------	---------------------------	-------------------------------

Features

1. The rolling of rollers reduces line pressure.
2. Suitable for the accumulation line.
3. By increasing the roller diameter from $\phi 9.5$ in the previous model to $\phi 11$, the gap between the rollers is narrowed to prevent conveyed products from getting caught.
4. Coefficient of rolling friction between plastic roller (LFB series) and conveyed product: 0.07
5. Plastic roller with higher coefficient of rolling friction than LFB series by 30% is available (MFR series). Suitable to improve throughput due to the shorter sliding time of the products when accumulation is released.



Chain pitch mm	Top plate width mm	Backflex radius mm	Number of links per unit
38.1	95.3	250	40

Chain Material Table/Tsubaki Model No.

Chain type	Top plate width	Material		Link color		Coefficient of friction <small>Note: 4</small>	Max. allowable load kN {kgf}	Chain mass kg/m	Operating temperature range °C	Max. allowable speed m/min	
		Link	Roller	Link	Roller					With lube	No lube
TPUS953Y-T-LAP-LFB-MFR	95.3	Low friction/Wear resistant LFB	Special engineering plastic	Brown	Cream	0.10	2.16{220}	3.3	-20 to (65)80	50	50
TPUS953Y-T-LAP-LFB		Low friction/Wear resistant LFB		Brown		0.07					

- Note: 1. Made-to-order products.
 2. Operating temperature of (the value in parentheses) is for wet conditions.
 3. Pins of both connecting chains and supporting plastic rollers are made of SUS304.
 4. Coefficient of rolling friction between plastic roller and conveyed product.
 5. Contact a Tsubaki representative for the availability of other chain materials.
 6. Plastic pin type is not available.

Model Numbering

Chain type	Top plate width	Chain type	Tab	Accumulation chain mark	Base chain material mark	Material mark	Number of links	Unit
TPUS	953	Y	- T -	LAP	- LFB	- MFR <small>Note: 2</small>	+ 40 <small>Note: 3</small>	L

L: Link

- Note: 1. Do not leave space between letters and symbols.
 2. The type of roller material will be LFB series, if not the material mark is specified.
 3. Minimum quantity: 2, maximum quantity: 99999.