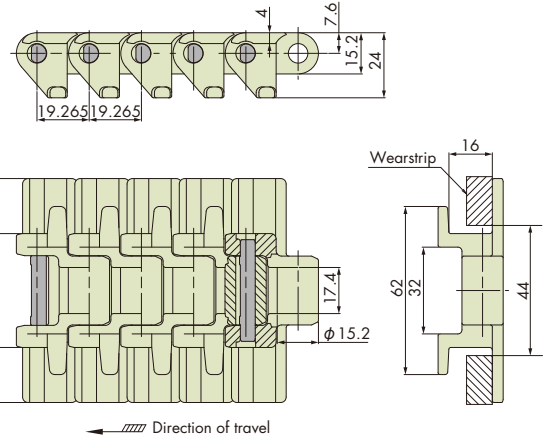
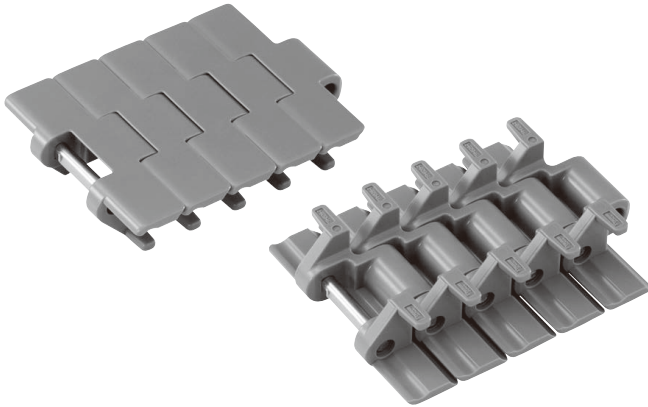


Features

- Adopts chain pitch of approx. half of conventional chains. Effective to reduce noise and to save space of the transfer section.
- Only odd number of teeth of TPS sprockets can be used with standardized parts.
- A chain that has tabs prevents the chain from floating in a corner and ascending/descending section, and prevents scratches on the top surface of the plate on the return-way.



Note: The pitch of 19.265 mm is designed to engage all teeth of TTUP1012T which is the sprocket for TPS chain with the equivalent teeth of 21T.

Chain pitch mm	Backflex radius mm	Number of links per unit
19.265	15	160

Chain Material Table

Material	Standard Chain										High-Function Chain										
	Standard			Low friction/Wear resistant			Advanced low friction/Wear resistant	Low friction			Low friction/Wear resistant	Chemical resistant	Electroconductive	Impact resistant		Antibacterial/Mold resistant	Electrostatic preventive	Middle friction	Acid resistant	Ultraviolet resistant	Food conveying
Material mark	—	B	BL	LFW	LFG	LFB	ALF	NLF	WR	HG	Y	E	DIA	DIY	MWS	SE	MF	AR	UVR	PFS	
Link color	Gray	Blue	Sky blue	White	Green	Brown	Light blue	Dark gray	Dark green	Navy blue	Matte white	Black	Cream	Green	Cream	Gray	Yellow	White	Light gray	Nile blue	
Max. allowable load kN {kgf}	1.18{120}										0.59{60}	0.82{84}	0.93{95}		1.18{120}		0.87{89}	1.06{108}	1.18{120}		
Max. allowable speed m/min	100										50										
Operating temperature range °C	-20 to 80			-20 to (65)80			-20 to 80	-20 to (65)80	-20 to 80	-20 to (65)80	-20 to 80			-20 to (65)80	-20 to 80	-20 to (60)80	-20 to 80	-20 to 80	-20 to 80		
Pin material	SUS304																				
Pin type	D-pin																				
TPM826-T	○	△	△	○	○	○	○	△	△	△	△	△	△	△	△	△	△	△	△	△	

Note: 1. "○": Made-to-order products, "△": Made-to-order products (RFQ).
 Not available for other chain materials that are not listed in the chain material table above.
 2. Operating temperature of (the value in parentheses) is for wet conditions.
 3. Plastic pin type is not available.

Tsubaki Model Table

Material	Low friction/Wear resistant		Top plate width	Chain mass kg/m <small>Note: 2</small>
Material mark	LFG	LFB		
Chain type	TPM826-T-LFG	TPM826-T-LFB	82.6	1.40

Note: 1. Chain type in normal face are made-to-order products. Refer to the chain material table above for availability.
 2. The chain mass of some chain materials are different from that shown in the Tsubaki model table above. Refer to the following information (unit: kg/m).
 Y, DIY: 1.7, DIA: 1.2
 3. The chain mass of the chain materials available whose information are not described in note 2 are the same with that in the Tsubaki model table above.

Model Numbering

Chain type	Top plate width	Tab	Material mark	Number of links	Unit
TPM	826 <small>Note: 2</small>	- T	- LFB <small>Note: 3</small>	+ 80 <small>Note: 4</small>	L
					L: Link

Connecting Pin

- SUS304 D-pin
Tsubaki model no. **TTUP-SUS-JPD**

Note: 1. Do not leave space between letters and symbols.
 2. Please check the width of the top plate in the Tsubaki model table above.
 3. Please check the chain material and material marks in the chain material table above.
 4. Minimum quantity: 2, maximum quantity: 99999.