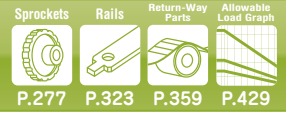


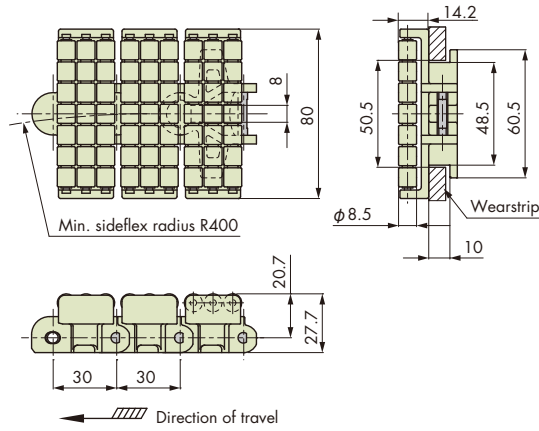
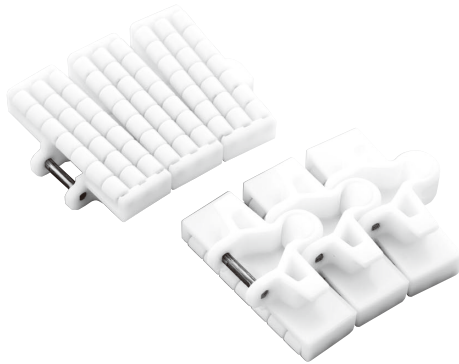
# Plastic Top/Curved Accumulation Chain TP-30UTW-LAP

Sideflexing Running



## Features

1. Roller rotation reduces line pressure.
2. Coefficient of rolling friction between plastic roller and conveyed product: 0.07.
3. Suitable for the accumulation line.



Chain pitch mm	Top plate width mm	Backflex radius mm	Number of links per unit
30	80	180	100

## Chain Material Table

Standard Chain		
Material	Low friction/Wear resistant	
Material mark	LFW	
Link color	White	
Max. allowable load kN {kgf}	0.7 {71}	
Max. allowable speed m/min	With lube	100
	No lube	50
Operating temperature range °C	-20 to (65)80	
Pin type	SUS304	
Availability	●	

- Note: 1. "●": Standard product.  
 2. Operating temperature of (the value in parentheses) is for wet conditions.  
 3. Plastic pin type is not available.

## Tsubaki Model Table

Material	Low friction/Wear resistant	Top plate width	Chain mass kg/m
Material mark	LFW		
Chain type	<b>TP-30UTW-LAP</b>	80	1.9

Note: Chain type in boldface is a standard product.

## Model Numbering

Chain type	Accumulation chain mark	Number of links	Unit
<b>TP-30UTW</b>	<b>- LAP</b>	<b>+ 100</b> <small>Note: 2</small>	<b>L</b>
			L: Link

- Note: 1. Do not leave space between letters and symbols.  
 2. Minimum quantity: 2, maximum quantity: 99999.