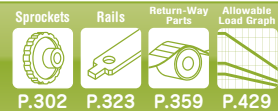


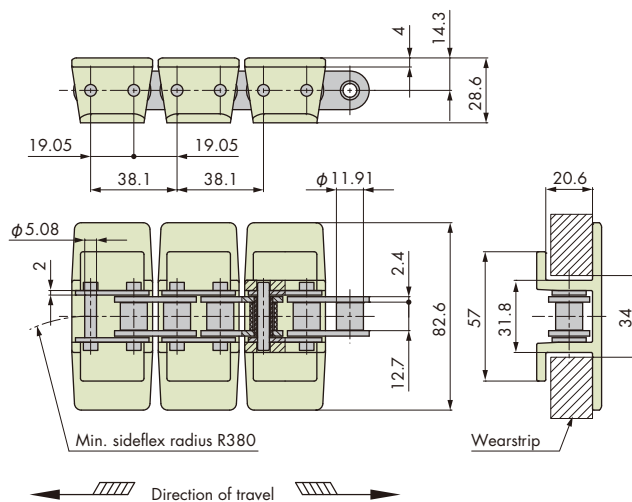
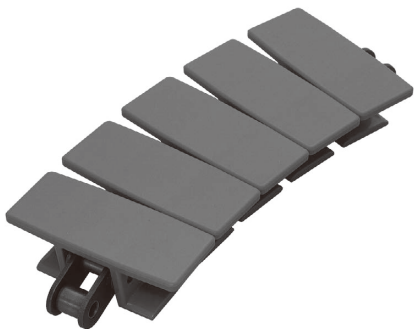
# Snap Top Chain TP-1873-T

Sideflexing Running



## Features

1. Sideflexing chain with high allowable load.
2. Top plates snap on to a sideflexing roller chain. The top plates can be replaced, if desired.



Chain pitch mm	Backflex radius mm	Number of links per unit
38.1	305	80 <small>Note</small>

Note: When top plate is attached.

## Chain Material Table

Material	Standard Chain						High-Function Chain					
	Standard			Low friction/Wear resistant			Low friction		Low friction/Wear resistant		High speed	Electrostatic preventive
Material mark	—	B	BL	LFW	LFG	LFB	NLF	WR	HG	HS	SE	UVR
Link color	Gray	Blue	Sky blue	White	Green	Brown	Dark gray	Dark green	Navy blue	Beige	Gray	Light gray
Max. allowable load kN {kgf}	Steel	2.16{220}										
	Stainless	0.88{90}										
Max. allowable speed m/min	With lube	100{60}										
	No lube	40{30}										
Operating temperature range °C	-20 to 80			-20 to (65)80			-20 to 80	-20 to (65)80	-20 to 50	-20 to 80		
TP-1873-T (top plate)	△	△	△	△	△	○	△	△	△	△	△	△

- Note: 1. "○": Made-to-order product, "△": Made-to-order products (RFQ).  
 Not available for other chain materials that are not listed in the chain material table above.  
 2. The allowable speed (the value in parentheses) is the value of the chain with SUS304 base chain.  
 3. Operating temperature of (the value in parentheses) is for wet conditions.

## Tsubaki Model Table

Material	Low friction/Wear resistant	Top plate width	Chain mass kg/m	Base chain material
Material mark	LFB	82.6	2.2	Steel
Chain type	TP-1873-TK325-LFB			SUS304
	TP-1873-SS-TK325-LFB			

- Note: 1. Chain type in normal face are made-to-order products.  
 2. The Tsubaki model table shown above is that of the base chain with top plates. The number of links is equal to that of the top plate. (This arrangement is different from that of TN and TNU.)  
 3. Sprockets for RS60 with 16 teeth or greater can be used. The hub may interfere with some sprockets depending on their type and shape. Please machine the hub with a diameter no greater than a "pitch diameter of 38.1 mm."  
 4. Contact a Tsubaki representative for the selection of the product.

## Top Plate Only

Model no.	Link color
TP-1873-TK325-TP-LFB	Brown
TP-1873-TK325-TP-WR	Dark green

- Note: 1. Made-to-order products.  
 2. Base chain for TP-1873-G can on page 238 can be used.

## Model Numbering

Chain type	Chain material mark	Tab	Top plate width	Material mark	Number of links	Unit
<b>TP-1873</b>	<b>- SS</b>	<b>- T</b>	<b>K325</b> <small>Note: 2</small>	<b>- LFB</b> <small>Note: 3</small>	<b>+ 80</b> <small>Note: 4</small>	<b>L</b>
None: Steel (Omit hyphen in front) SS: SUS304						L: Link

- Note: 1. Do not leave space between letters and symbols.  
 2. Please check the width of the top plate in the Tsubaki model table above.  
 3. Please check the chain material and material marks in the chain material table above.  
 4. Minimum quantity: 2, maximum quantity: 99999.