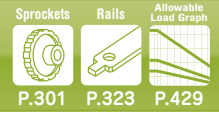


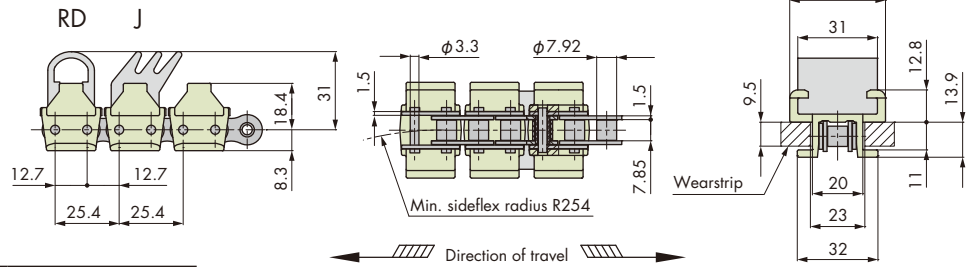
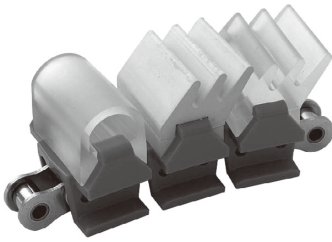
# Snap Top Gripper Chain TP-1843-G

Sideflexing Running



## Features

1. Gripper chains are used to hold products from both sides to convey them vertically.
2. A selection of the grip rubber shape and material is available.
3. Top plates and grip rubbers can be replaced.



Chain pitch mm	Backflex radius mm	Number of links per unit
12.7	-	120 <sup>Note</sup>

Note: When top plate is attached.

## Chain Material Table

Material	Standard Chain						High-Function Chain				
	Standard			Low friction/Wear resistant			Low friction		Low friction/ Wear resistant	Electrostatic preventive	Ultraviolet resistant
Material mark	-	B	BL	LFW	LFG	LFB	NLF	WR	HG	SE	UVR
Link color	Gray	Blue	Sky blue	White	Green	Brown	Dark gray	Dark green	Navy blue	Gray	Light gray
Max. allowable load kN {kgf}	Steel	0.88{90}									
	Stainless	0.36{37}									
Max. allowable speed m/min	With lube	-									
	No lube	100{60}									
Operating temperature range °C	-20 to 80										
TP-1843-G (top plate)	△	△	△	△	△	○ <sup>Note: 3</sup>	△	△	△	△	△

Note: 1. "○": Made-to-order product, "△": Made-to-order products (RFQ).

Not available for other chain materials that are not listed in the chain material table above.

2. The allowable speed (the value in parentheses) is the value of the chain with SUS304 base chain.

3. DU and JU type grip rubbers are made-to-order products (RFQ).

4. Be sure to lubricate contact areas between the top plates and rails periodically.

## Tsubaki Model Table

Base chain material		Top plate material	Grip rubber type			Chain mass kg/m
Steel	SUS304		Grip rubber shape	Grip rubber material	Grip rubber color	
TP-1843-G-LFB	TP-1843-SS-G-LFB	Low friction/ Wear resistant LFB	-	-	-	0.90
TP-1843-G-DU-LFB	TP-1843-SS-G-DU-LFB		RD	Urethane	Amber	1.40
TP-1843-G-DN-LFB	TP-1843-SS-G-DN-LFB		RD	Nitrile	White	
TP-1843-G-DS-LFB	TP-1843-SS-G-DS-LFB		RD	Silicone	Translucent white	
TP-1843-G-DH-LFB	TP-1843-SS-G-DH-LFB		RD	CSM	White	
TP-1843-G-JU-LFB	TP-1843-SS-G-JU-LFB		J	Urethane	Amber	1.60
TP-1843-G-JN-LFB	TP-1843-SS-G-JN-LFB		J	Nitrile	White	
TP-1843-G-JS-LFB	TP-1843-SS-G-JS-LFB		J	Silicone	Translucent white	
TP-1843-G-JH-LFB	TP-1843-SS-G-JH-LFB		J	CSM	White	

Note: 1. Chain type in normal face are made-to-order products.

2. The chain type described on the left is that of a completed chain with top plates, base chains and grip rubbers (excluding TP-1873-G-LFB and TP-1873-SS-G-LFB). The number of links is equal to that of the top plate. (This arrangement is different from that of TN and TNU.)

3. Sprockets for RS40 with 17 teeth or greater can be used. The hub may interfere with some sprockets depending on their type and shape. Please machine the hub with a diameter no greater than a "pitch diameter of 19 mm."

4. Contact a Tsubaki representative for the selection of products.

5. Refer to page 238 for information about the base chain, connecting link, top plate and grip rubber.

## Model Numbering

Chain type	Chain material mark	Gripper	Grip rubber shape	Grip rubber material	Top plate material mark	Number of links	Unit
<b>TP-1843</b>	<b>- SS</b>	<b>- G</b>	<b>- J</b>	<b>N</b>	<b>- LFB</b>	<b>+ 120</b>	<b>L</b>
	None: Steel (Omit hyphen in front) SS: SUS304		None: No grip rubbers (only base chain and plastic top plates) D: RD type J: J type	None: No grip rubbers (only base chain and plastic top plates) U: Urethane N: Nitrile S: Silicone H: CSM	<sup>Note: 2</sup>	<sup>Note: 3</sup>	L: Link

Note: 1. Do not leave space between letters and symbols.

2. Please check the chain material and material marks in the chain material table above.

3. Minimum quantity: 2, maximum quantity: 99999.