

Support Head/Side Top Bracket/Connecting Joint

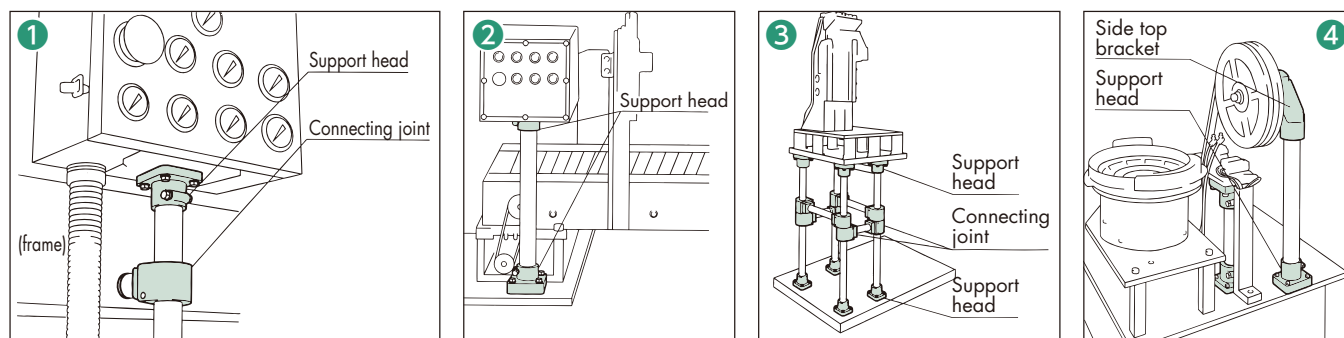
Applications

Support head: Supports the conveyor frame from underneath. Use support head to attach support pipe to conveyor frame. Wiring can be installed through the inside of the support head.

Side top bracket: Supports conveyor frame from the side. It is suitable for installing a tray under a conveyor or for using with a conveyor of simple structure.

Connecting joint: Makes conveyor stable by connecting two legs.

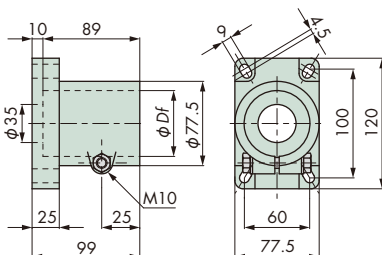
Installation Example



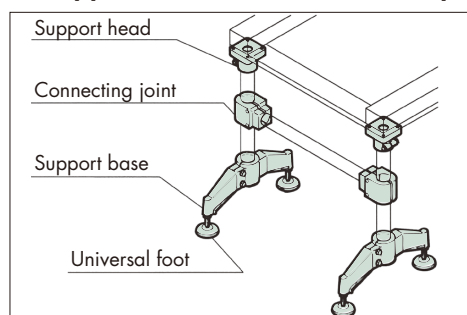
- ❶❷ : Installation on control panels.
- ❸ : Use as joint parts instead of using metal parts or installation by welding. (Easy installation and removal)
- ❹ : Use as joint parts for machines.

Specification Table

■ Support Head



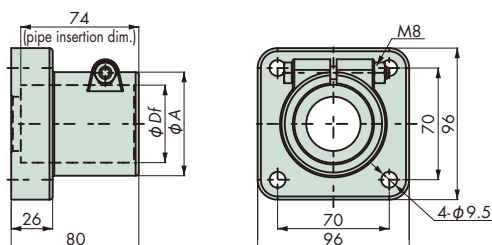
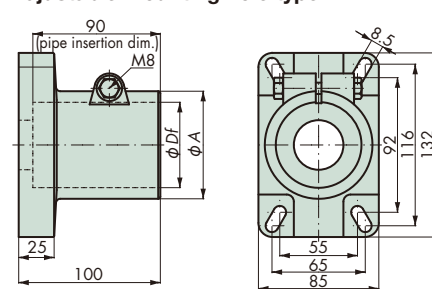
■ Support Head Installation Example



Tsubaki model no.	Applicable pipe outer diameter ϕD (nominal diameter)	Material	
		Body	Bolt/Nut/Washer
TP-CPSH48	48.6 (1 1/2)	Reinforced polyamide (color: black)	Stainless steel
TP-CPSH60	60.5 (2)		

Note: Standard products.

Fixed mounting hole type

Adjustable mounting hole type Note: 4

Type	Tsubaki model no.	Applicable pipe outer diameter ϕD_f (nominal diameter)	ϕA	Material	
				Body	Bolt/Nut/Washer
Fixed mounting hole type	TP-C14050T-BH	48.6 (1½)	65	Reinforced polyamide (color: black)	Stainless steel
Adjustable mounting hole type	TP-C14741T-BH				
	TP-C14739T-BH	60.5 (2)	76		

Note: 1. Standard products.

1. Standard products.
2. Withstand load (all sizes): 9.8kN (1000kgf) when the pipe is inserted and the load is applied vertically.

3. Pipe retention force (all sizes): Consider the pipe retention force to be 0.78kN (80kgf) (reference value) when tightening the bolt with a tightening torque of 14.7N·m (1.5kgf·m).

4. As of June 2011, dimensions were changed as shown above.