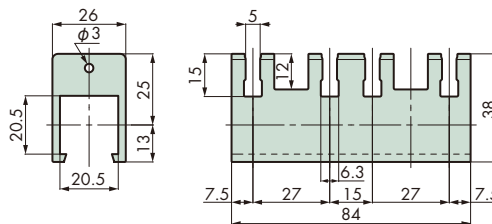
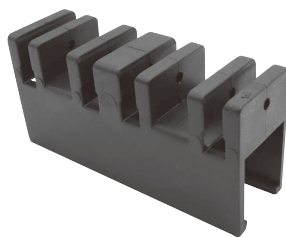


Spacers/Washer/Dedicated Rails

Specification Table

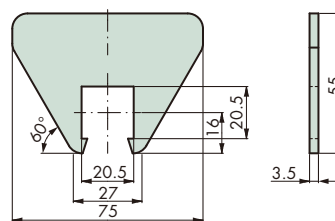
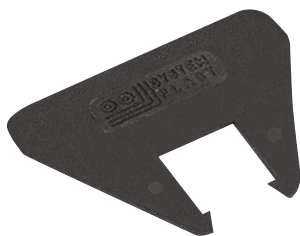
■ Spacer



Tsubaki model no.	Material	Operating temperature range °C
TP-C14320T-SP	Polyamide (color: black)	-20 to 80

Note: 1. Standard product.
2. For use with TP-C19067VT-PR guide rail.
3. Mount on 20 x 20 mm square shaft.

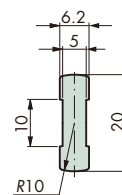
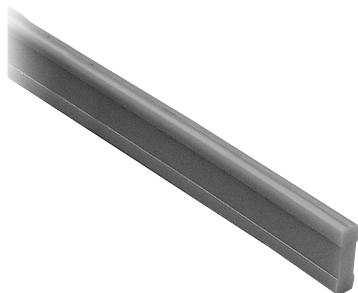
■ Washer



Tsubaki model no.	Material	Operating temperature range °C
TP-C14322T-WS	Polyamide (color: black)	-20 to 80

Note: 1. Standard product.
2. Use to prevent top chains from interference with multiple strands conveyor.
3. Please use with TP-C14320T-SP (spacer).

■ Dedicated Rail



Tsubaki model no.	Standard length per unit m	Material	Operating temperature range °C
TP-C19067VT-PR	60	UHMW-PE (color: green)	-20 to 60

Note: 1. Standard product.
2. Dedicated rail for TP-C14320T-SP. Available to purchase per meter.
3. When a rail has become worn, its service life can be extended by flipping it over.

Model Numbering

■ Dedicated Rail

Top chain components	Code	Length	Unit
TP-C	19067VT-PR +	60 <small>Note: 2, 3</small>	M
			M: m

Note: 1. Do not leave space between letters and symbols.
2. The unit of length is 1 m.
3. Minimum length: 1, maximum length: 60.