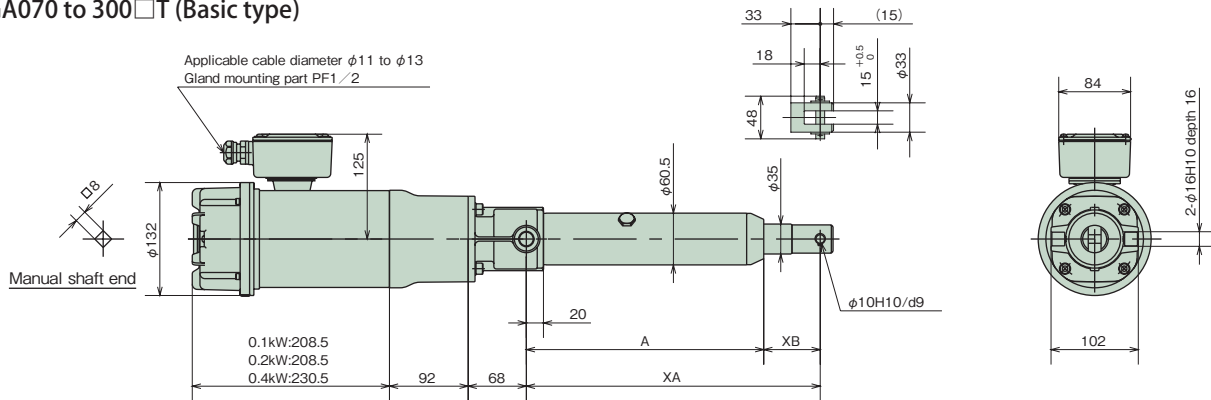
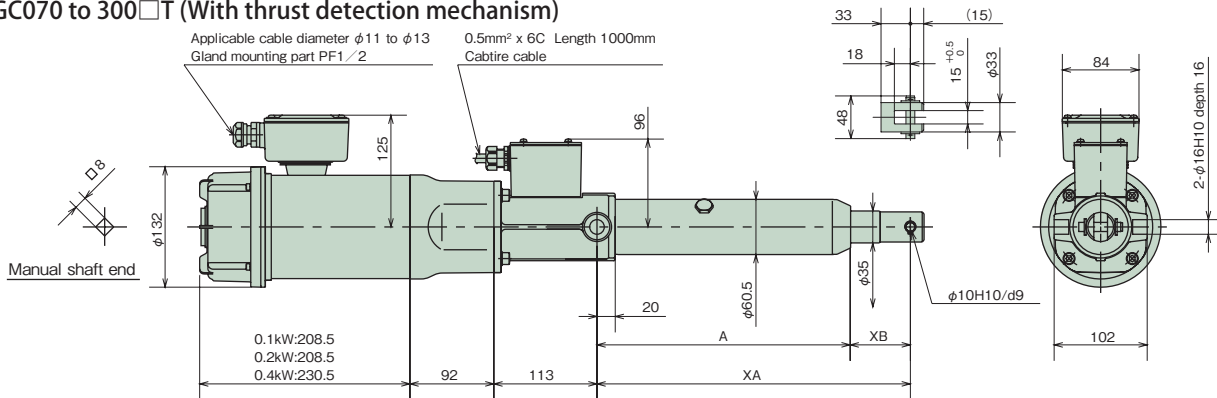


Dimensions Table Straight type

LPGA070 to 300□T (Basic type)



LPGC070 to 300□T (With thrust detection mechanism)



Unit: mm

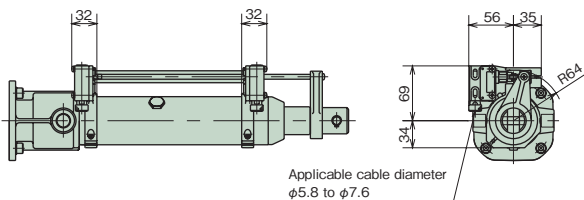
Model	Speed symbol	Shape of main body	Nominal stroke	A	XA		XB		Approx. mass (kg)		
					MIN	MAX	MIN	MAX	LPGA	LPGC	
LPGA LPGC	070 100 150 300	L M H U	T	100	178	243	343	65	165	14	18
				200	278	343	543	65	265	15	19
				300	378	443	743	65	365	16	21
				400	478	543	943	65	465	18	22
				500	578	643	1143	65	565	19	23
				600	678	743	1343	65	665	20	24
				800	878	963	1763	85	885	22	26
				1000	1078	1183	2183	105	1105	24	28
			1200	1278	1403	2603	125	1325	27	31	

Note) 1. The mechanical stroke includes a margin of 3 to 8 mm of the nominal stroke on both sides.

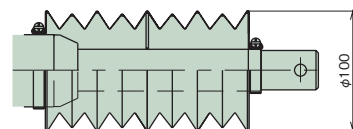
2. For U speed, only 070 and 100 are applied.

Options

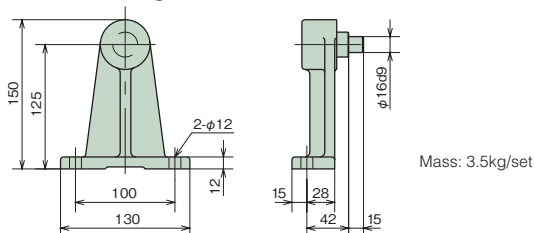
External LS (- L)



Bellows (- J)

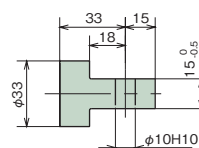


Trunnion fitting (LPGA300-T)



Note) Apply grease to the trunnion pin and into the trunnion hole for installation.

I-type end fitting (- I)



Note) Shipped as attached to the main body. The XA dimensions are the same as the standard U-type end fitting.

* Dimensions with no tolerance described have general tolerance, and their sizes become larger by approximately 2 to 5mm from the described dimensions. When designing the machine, take margins into consideration.