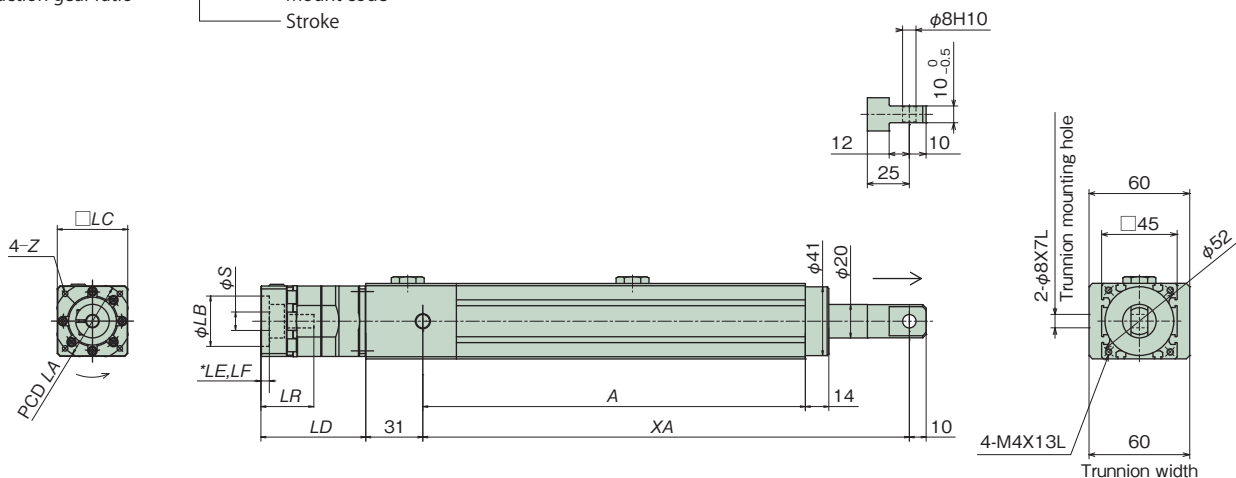


With precision planetary reducer

Dimensions table (□45 frame)

LPES30R□T□□□□

Reduction gear ratio — Mount code
Stroke



Mount code	LC	LB	LE*	S	LR	LF*	LA	Z	LD
B2D	42	30	5	8	32	5	45	M3×7L	62.5
B3D	42	30	5	8	32	5	46	M4×9L	62.5
E3G	65	50	5	11	35	6	70	M4×9L	65.5

* LE : spigot depth. LF : distance to coupling.

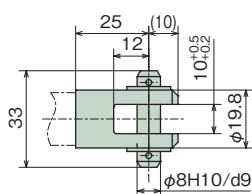
Stroke	A	XA	
		MIN	MAX
100	228	290	390
200	328	410	610
300	428	510	810

Stroke	Mass
	100
200	2.6
300	3.0

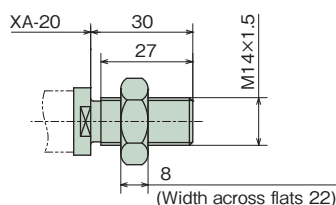
* The above mass does not include the mass of the servomotor.

Options

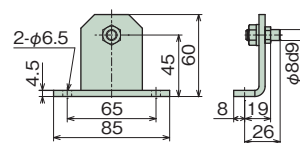
U-type end fitting (- U)



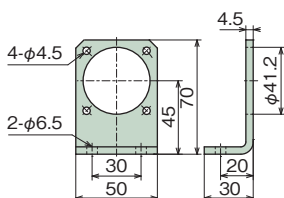
N-type end fitting (- N)



Trunnion fitting (LPE015-T)



Foot fitting (LPE015-F)



Trunnion fitting + foot fitting (LPE015-FT)



In the case of the above installation, model No. LPE15-FT comes with a set of trunnion and foot fittings.