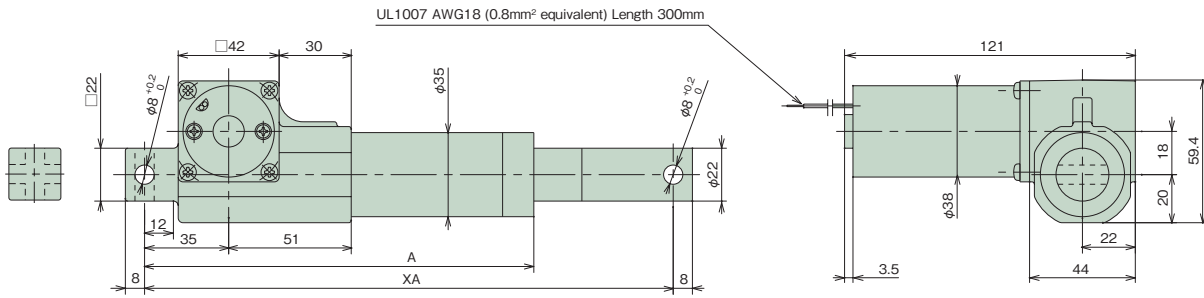


Dimensions Table

LPF010 to LPF040: Basic type



Model number		Rated thrust		Stroke	Rated speed	Dimensions mm			Approximate mass
						A	XA		
N	{kgf}	mm	mm/s	MIN.	MAX.		kg		
LPF010H	0.5 V	100	10.2	50	54	162	220	270	1.0
	1.0 V			100		212	270	370	1.2
	1.5 V			150		262	320	470	1.4
	2.0 V			200		312	370	570	1.6
	3.0 V			300		412	480	780	2.0
LPF020M	0.5 V	200	20.4	50	24	162	220	270	1.0
	1.0 V			100		212	270	370	1.2
	1.5 V			150		262	320	470	1.4
	2.0 V			200		312	370	570	1.6
	3.0 V			300		412	480	780	2.0
LPF040L	0.5 V	400	40.8	50	15	162	220	270	1.0
	1.0 V			100		212	270	370	1.2
	1.5 V			150		262	320	470	1.4
	2.0 V			200		312	370	570	1.6
	3.0 V			300		412	480	780	2.0

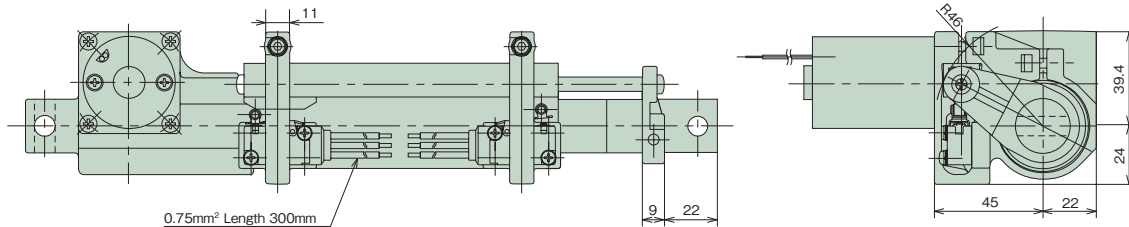
Note) V is attached at the end of the model number for 24V DC.

Options

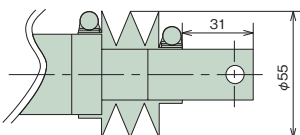
■ With external limit switch for stroke adjustment

Note) No limit switch for stroke adjustment is attached to the model of 50 mm stroke.

The above-mentioned XA dimensions will not change even after attaching an external limit switch for stroke adjustment and bellows. The mechanical stroke preset value is 60mm or more. However, note that it does not include the coasting distance.



■ With bellows



■ LS specification (common for LPF010H – LPF600L)

Model	D2VW-5L2A-1M equivalent OMRON
Circuit configuration	
Power rating	250V AC 4A (cos $\phi=0.7$), 30V DC 4A (time constant 7ms or less)
Connection	0.75mm ² × 3C Length 300m, discrete lead wire