

# Model Numbers and Specifications

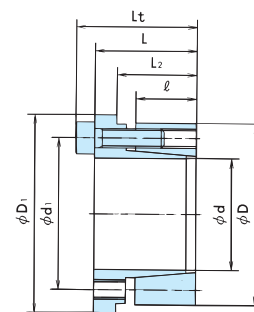
## Electroless Nickel-Plated (KE-KP) Models

### ● Important Notes

1. Dimensions and transmissible torque are the same as the standard KE models.
2. The units are plated with peel-proof electroless nickel.
3. The locking bolts are DISGO treated so that assembly lubrication is not necessary. The electroless nickel-plated models are chrome-free and environmentally friendly.

### ● Applications

Most suitable for clean-room operation requiring minimum rust.



\* Note) 3

Model No. d X D Shaft Diameter X Outer Diameter mm	Dimensions mm						Transmissible Torque		Transmissible Thrust		Contact Pressure				Locking Bolts				Mass
	ℓ	L <sub>2</sub>	L	L <sub>t</sub>	d <sub>1</sub>	D <sub>1</sub>	Mt		Pax		Shaft P		Hub P'		Quantity	Size	Tightening Torque M <sub>A</sub>		kg
							N · m	{kgf · m}	kN	{kgf}	MPa	{kgf/mm <sup>2</sup> }	MPa	{kgf/mm <sup>2</sup> }			N · m	{kgf · m}	
PL005 X 016 KE-KP	8	12	13.5	16.5	11.5	18.5	7.5	0.77	2.86	292	223	22.8	70	7.1	3	M 3 × 10	1.86	0.19	0.02
PL006 X 017 KE-KP	8	12	13.5	16.5	12.5	19.5	9.0	0.92	2.86	292	186	19.0	66	6.7	3	M 3 × 10	1.86	0.19	0.02
PL008 X 021 KE-KP	10	14.5	16.5	20.5	15.6	23.5	24.5	2.5	5.96	608	232	23.7	88	9.0	3	M 4 × 12	4.8	0.49	0.03
PL010 X 023 KE-KP	10	14.5	16.5	20.5	17.6	25.5	31.4	3.2	5.96	608	186	19.0	80	8.2	3	M 4 × 12	4.8	0.49	0.04
PL011 X 024 KE-KP	10	14.5	16.5	20.5	18.6	26.5	34.3	3.5	5.96	608	169	17.2	77	7.9	3	M 4 × 12	4.8	0.49	0.04
PL012 X 026 KE-KP	10	14.5	16.5	20.5	20	28.5	50.0	5.1	7.94	810	207	21.1	95	9.7	4	M 4 × 12	4.8	0.49	0.05
PL014 X 028 KE-KP	12	17.5	20	24	22	30.5	73.5	7.5	9.90	1010	184	18.8	92	9.4	5	M 4 × 14	4.8	0.49	0.06
PL015 X 029 KE-KP	12	17.5	20	24	23	31.5	94.1	9.6	11.9	1210	207	21.1	107	10.9	6	M 4 × 14	4.8	0.49	0.07
PL016 X 030 KE-KP	12	17.5	20	24	24	32.5	101	10.3	11.9	1210	194	19.8	103	10.5	6	M 4 × 14	4.8	0.49	0.07
PL017 X 031 KE-KP	12	17.5	20	24	25	33.5	107	10.9	11.9	1210	182	18.6	100	10.2	6	M 4 × 14	4.8	0.49	0.07
PL018 X 032 KE-KP	12	17.5	20	24	26	34.5	113	11.5	11.9	1210	172	17.6	97	9.9	6	M 4 × 14	4.8	0.49	0.08
PL019 X 033 KE-KP	12	17.5	20	24	27	35.5	120	12.2	11.9	1210	163	16.6	94	9.6	6	M 4 × 14	4.8	0.49	0.08
PL020 X 038 KE-KP	15	20.5	25	30	30	42	206	21.0	19.4	1980	203	20.7	107	10.9	6	M 5 × 18	9.8	1.0	0.14
PL022 X 040 KE-KP	15	20.5	25	30	32	44	226	23.1	19.4	1980	184	18.8	101	10.3	6	M 5 × 18	9.8	1.0	0.15
PL024 X 042 KE-KP	15	20.5	25	30	34	46	329	33.6	25.9	2640	225	23.0	128	13.1	8	M 5 × 18	9.8	1.0	0.16
PL025 X 043 KE-KP	15	20.5	25	30	35	47	343	35.0	25.9	2640	216	22.0	125	12.8	8	M 5 × 18	9.8	1.0	0.17
PL028 X 046 KE-KP	17	22.5	28	33	38.5	50	432	44.1	29.2	2980	191	19.5	117	11.9	9	M 5 × 18	9.8	1.0	0.21
PL030 X 048 KE-KP	17	22.5	28	33	40.5	52	515	52.5	32.4	3310	199	20.3	124	12.7	10	M 5 × 18	9.8	1.0	0.22
PL032 X 050 KE-KP	17	22.5	28	33	42.5	54	549	56.0	32.4	3310	186	19.0	120	12.2	10	M 5 × 18	9.8	1.0	0.23
PL035 X 057 KE-KP	19	25	32	38	47.5	62	678	69.2	36.6	3730	172	17.5	106	10.8	8	M 6 × 22	16.7	1.7	0.36
PL038 X 060 KE-KP	19	25	32	38	50.5	65	921	94.0	45.8	4670	198	20.2	125	12.8	10	M 6 × 22	16.7	1.7	0.39
PL040 X 062 KE-KP	19	25	32	38	52.5	67	969	98.9	45.8	4670	188	19.2	122	12.4	10	M 6 × 22	16.7	1.7	0.40
PL042 X 064 KE-KP	19	25	32	38	54.5	69	1010	103	45.8	4670	179	18.3	118	12.0	10	M 6 × 22	16.7	1.7	0.42
PL045 X 067 KE-KP	19	25	32	38	57.5	72	1090	111	45.8	4670	168	17.1	113	11.5	10	M 6 × 22	16.7	1.7	0.44
PL048 X 070 KE-KP	19	25	32	38	60.5	75	1390	142	54.9	5600	188	19.2	129	13.2	12	M 6 × 22	16.7	1.7	0.46
PL050 X 072 KE-KP	19	26	34.5	40.5	63.5	77	1700	173	64.1	6540	211	21.5	146	14.9	14	M 6 × 25	16.7	1.7	0.50
PL055 X 077 KE-KP	19	26	34.5	40.5	67.5	82	1860	190	64.1	6540	191	19.5	137	14.0	14	M 6 × 25	16.7	1.7	0.55
PL060 X 082 KE-KP	19	26	34.5	40.5	72.5	87	2180	222	68.6	7000	188	19.2	137	14.0	15	M 6 × 25	16.7	1.7	0.59
PL065 X 087 KE-KP	19	26	34.5	40.5	77.5	92	2360	241	68.6	7000	173	17.7	129	13.2	15	M 6 × 25	16.7	1.7	0.63
PL070 X 097 KE-KP	22	31.5	40.5	48.5	85.5	102	3750	383	101	10300	206	21.0	148	15.1	12	M 8 × 30	40.2	4.1	0.99
PL075 X 102 KE-KP	22	31.5	40.5	48.5	90.5	107	4030	411	101	10300	192	19.6	141	14.4	12	M 8 × 30	40.2	4.1	1.0
PL080 X 107 KE-KP	22	31.5	41.5	49.5	95.5	112	5010	511	118	12000	210	21.4	157	16.0	14	M 8 × 30	40.2	4.1	1.1
PL085 X 112 KE-KP	22	31.5	41.5	49.5	100.5	117	5320	543	118	12000	198	20.2	150	15.3	14	M 8 × 30	40.2	4.1	1.2
PL090 X 123 KE-KP	29	41.5	54	64	109.5	128	8960	914	187	19100	224	22.9	165	16.8	14	M10 × 40	81.3	8.3	2.1
PL095 X 128 KE-KP	29	41.5	54	64	114.5	133	9460	965	187	19100	213	21.7	158	16.1	14	M10 × 40	81.3	8.3	2.2
PL100 X 133 KE-KP	29	41.5	54	64	119.5	138	9900	1010	187	19100	203	20.7	152	15.5	14	M10 × 40	81.3	8.3	2.3

Notes) 1. Stocked models are in bold.

2. Mt indicates torque at 0 transmissible thrust, while Pax indicates transmissible thrust at 0 torque. If transmissible torque and thrust apply simultaneously calculate and compare the combined value with the transmissible torque provided in the table.

3. Dimensions when this product is attached to the shaft and hub.